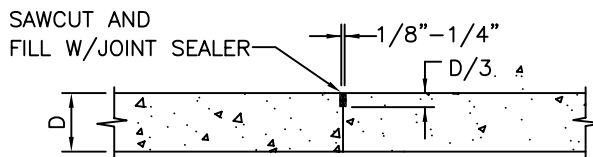


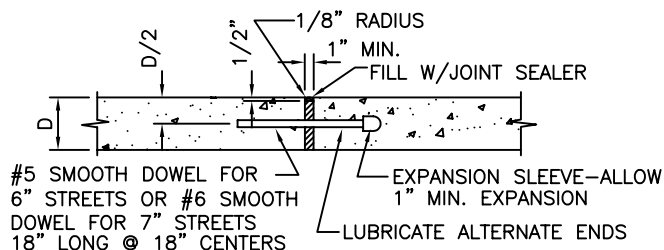
**TYPE A**

EXPANSION JOINT OR PAVEMENT TERMINATION



**TYPE C (WITHOUT TIE BAR)**

CONTRACTION JOINT

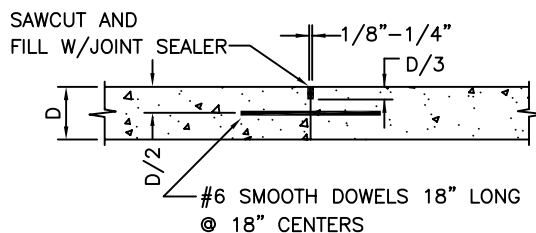


#5 SMOOTH DOWEL FOR 6" STREETS OR #6 SMOOTH DOWEL FOR 7" STREETS 18" LONG @ 18" CENTERS  
 EXPANSION SLEEVE—ALLOW 1" MIN. EXPANSION  
 LUBRICATE ALTERNATE ENDS

BAR SUPPORT ASSEMBLIES OR CHAIRS REQUIRED

**TYPE E**

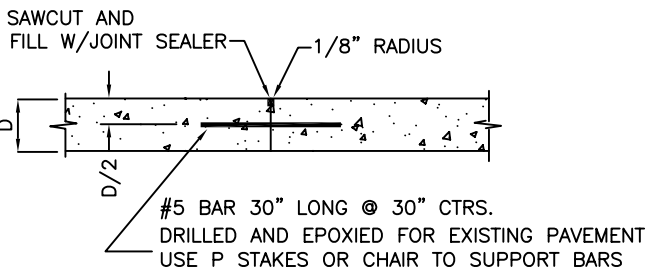
REINFORCED EXPANSION JOINT



BAR SUPPORT ASSEMBLIES OR CHAIRS  
 LUBRICATE ALTERNATE ENDS OF DOWELS

**TYPE D (STREETS 7" AND GREATER)**

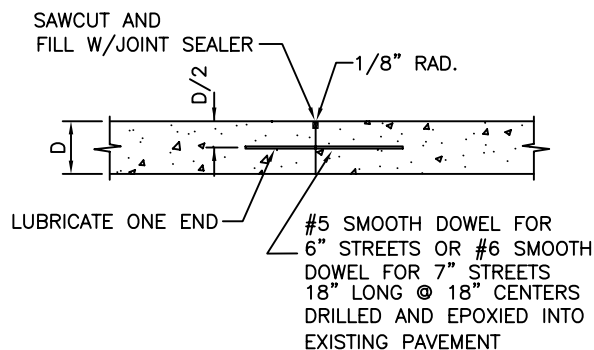
REINFORCED CONTRACTION JOINT



#5 BAR 30" LONG @ 30" CTRS.  
 DRILLED AND EPOXIED FOR EXISTING PAVEMENT  
 USE P STAKES OR CHAIR TO SUPPORT BARS

**TYPE L**

LONGITUDINAL CONSTRUCTION JOINT  
 (With Steel)



#5 SMOOTH DOWEL FOR 6" STREETS OR #6 SMOOTH DOWEL FOR 7" STREETS 18" LONG @ 18" CENTERS DRILLED AND EPOXIED INTO EXISTING PAVEMENT

**TYPE B**

TRANSVERSE CONSTRUCTION JOINT

**NOTES:**

1. CITY OF JACKSON "STANDARD SPECIFICATIONS FOR STREET IMPROVEMENTS 2009" SHALL APPLY.
2. EXPANSION JOINTS ARE PLACED AT APPROXIMATELY 250 FOOT INTERVALS OR AS DIRECTED BY THE CITY ENGINEER.
3. SAW CUT DEPTH SHALL BE ONE THIRD OF PAVEMENT THICKNESS
4. ALL STEEL MUST BE SECURELY SUPPORTED TO BE POSITIONED AS SPECIFIED.

DRAWING NO. 305

**CITY OF JACKSON, MISSOURI**

K.A.P. 03/31/11  
 Approved Date

**PORTLAND CEMENT CONCRETE STREET STANDARD**  
**EXPANSION / CONSTRUCTION JOINT DETAILS**

Revisions